



PT. INDOTARA PERSADA

Our Marketing Office and After Sales Service Center

Head Office

50/F, Menara BCA Grand Indonesia
Jl. M.H. Thamrin No.1
Jakarta Pusat 10310
021 - 5011 2223
horeca@indotara.id



Semarang Office

Wisma HSBC Lt. 6 Suite 609
Jl. Gajah Mada No.135
Semarang, Jawa Tengah 50134
024 - 40 300 887
smg.horeca@indotara.id



Marketing Office

APL Tower 6th Floor No. 6 Central Park,
Jl. Letjen S. Parman Kav 28,
Jakarta Barat - 11440
021 - 5011 2223
horeca@indotara.id



Medan Office

Sutomo Tower Lantai 5H
Jl. Sutomo Ujung No.28,
Kota Medan, Sumatera Utara 20235
061 - 50 300 591
mdn.horeca@indotara.id



Graha Indotara

Millenium Industrial Estate
Jl. Millenium 22 Blok R3 No. 1
Cikupa, Tangerang - Banten 15720
021 - 5011 2223
horeca@indotara.id



Makassar Office

Fajar Graha Pena Lt. 5
Jl. Urip Sumoharjo No. 20,
Makassar - South Sulawesi 90234
021 - 5011 2223
mks.horeca@indotara.id



Bandung Office

Wisma HSBC Lt. 6 Suite B
Jl. Asia Afrika No. 116
Bandung, Jawa Barat 40112
021 - 5011 2223
bdg.horeca@indotara.id



Balikpapan Office

Panin Tower Lt. 8 - Grand Sudirman
Jl. Jendral Sudirman No.7 Klandasan Ilir,
Balikpapan Kota, Kalimantan Timur 76114
021 - 5011 2223
bpp.horeca@indotara.id



Surabaya Office

Japfa Indoland Center, Tower 1 Lt. 10/1008
Jl. Jendral Basuki Rahmat 129-137
Surabaya 60271
031 - 3360 1483
sby.horeca@indotara.id



Bali Office

Benoa Square Lt. 2
Jl. Bypass Ngurah Rai No. 21 A Kedonganan,
Kuta Badung - Bali Indonesia 80361
021 - 5011 2223
bali.horeca@indotara.id



Yogyakarta Office

Hartono Mall Yogyakarta Lt. 3
Kaliwaru, Condongcatur,
Sleman, Yogyakarta 55281
021 - 5011 2223
yog.horeca@indotara.id



Singapore Office

Marina Bay Financial Centre Tower 3
17F, 12 Marina Boulevard
Singapore - 018982
021 - 5011 2223
sing.horeca@indotara.id



ONOKA



CAPSULE HOUSE
PREFABRICATED HOUSE

CONTENT



Capsule House OVL-E7.....	4	Flat Pack Container House	48
Capsule House OVL-E5.....	6	Detachable Container House	50
Glass Steel Apple Cabin OVL-PB01.....	8	Expandable Tiny House	52
Glass Steel Apple Cabin OVL-PB02.....	10	Expandable Container House	54
Glass Steel Apple Cabin OVL-PB03.....	12	Container Home.....	56
Glass Steel Apple Cabin OVL-PB05.....	14	Container Resort.....	58
Glass Steel Apple Cabin OVL-PB06.....	16	Container Hotel.....	59
Glass Steel Apple Cabin OVL-PB09.....	18	Container Resort.....	60
Glass Steel Apple Cabin OVL-DB01	20	Container Mall & Containers Shop	62
Glass Steel Apple Cabin OVL-DB02	22	Container School	64
Glass Steel Apple Cabin OVL-DB03	24	Prefab K Class Room.....	65
Glass Steel Apple Cabin OVL-DB04	26	Word Cup Container	66
Glass Steel Apple Cabin OVL-TB01.....	28	Prefab Labor Camp K House	68
OVL-MB01	30	Refugee House.....	71
OVL-MB02	31	Prefab Labor Camp T House	72
Capsule House Model 1	32	Sudan Home.....	74
Capsule House Model 2.....	34	Light Steel Villa	76
Capsule House Model 3.....	36	Portable Toilets	77
Capsule House Model 4.....	38	Steel Structure Ware House	78
Capsule House Model 5.....	40	Steel Sheds	80
Folding Container House (Camp).....	44		
Folding Flat Pack Container House.....	46		



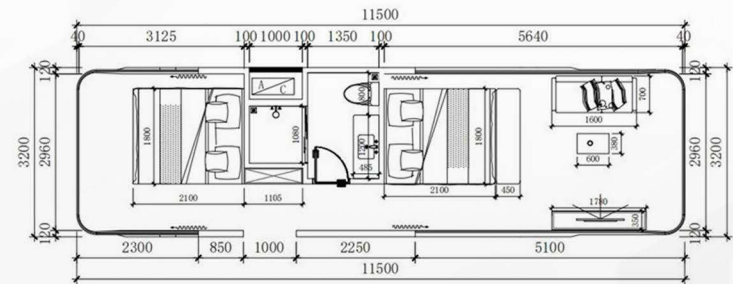
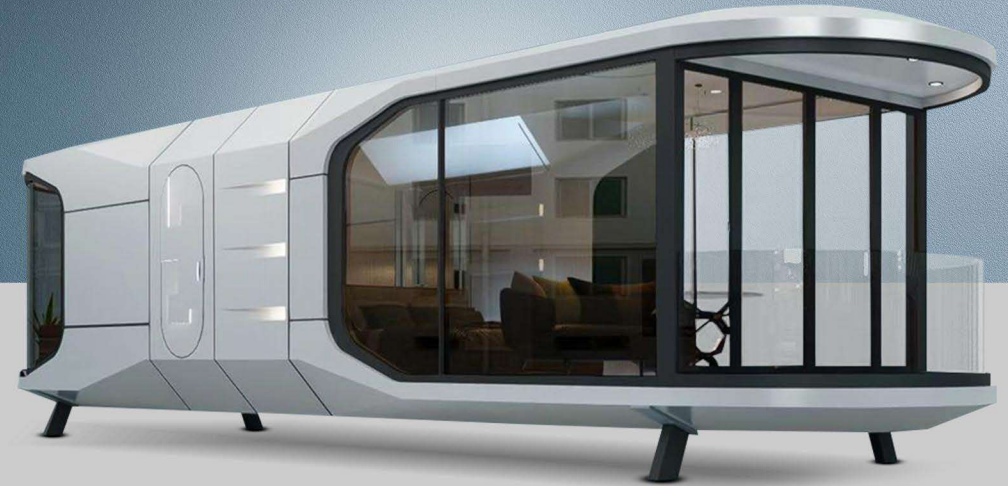
CAPSULE HOUSE OVL-E7



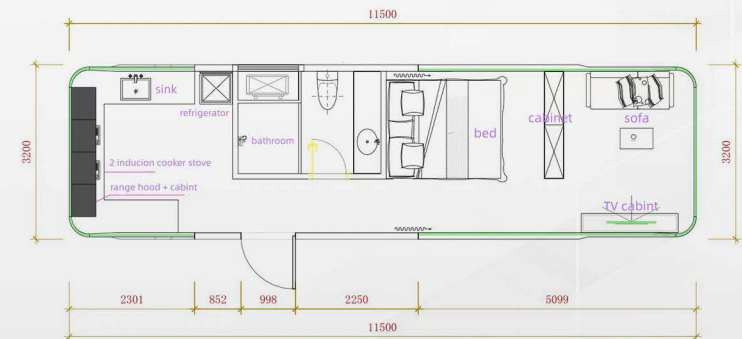
ONOカ

OVL-E7

ONOカ



1BEDROOM+1BALCONY



2BEDROOM+1BALCONY

SIZE : 11500*3200*3200mm
CONSTRUCTION : 36.8 m²
THE NUMBER OF PEOPLE : 4-6

Window

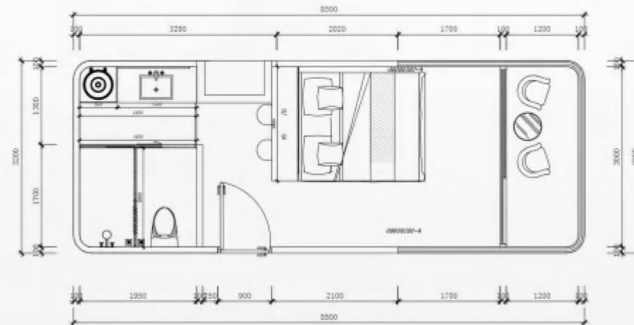
CAPSULE HOUSE OVL-E5



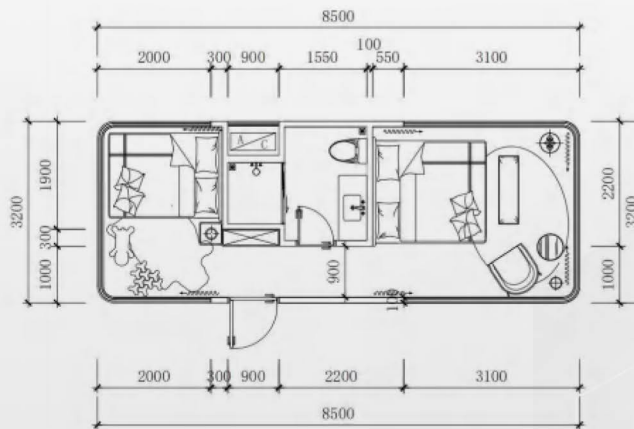
ONOカ

OVL-E5

ONOカ



SIZE : 8500*3200*3200MM
CONSTRUCTION AREA : 27.2 M2
THE NUMBER OF PEOPLE : 3-4
ROOM TYPE : 2 BEDROOM / 1
BEDROOM + 1 BALCONY



GLASS STEEL APPLE CABIN

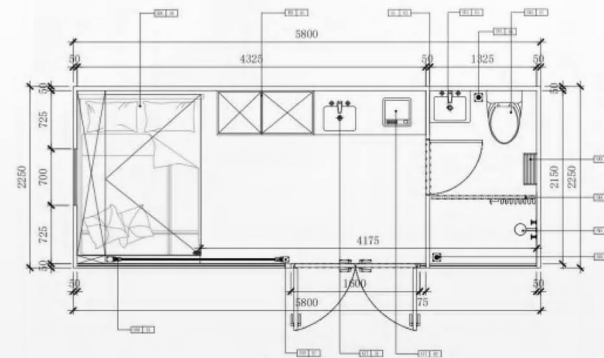


ONOカ

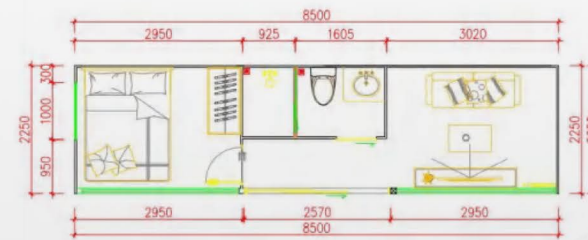


OVL-PB01

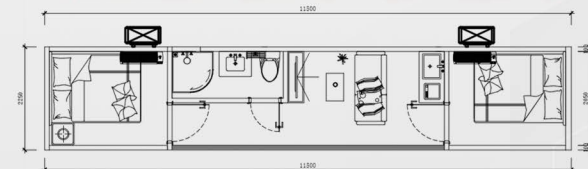
ONOカ



**SIZE : 5800*2250*2450MM
CONSTRUCTION AREA : 13 M²
THE NUMBER OF PEOPLE : 1-2**



**SIZE : 5800*2250*2450MM
CONSTRUCTION AREA : 19 M²
THE NUMBER OF PEOPLE : 2-4**



**SIZE : 11500*2250*2450MM
CONSTRUCTION AREA : 25.8 M²
THE NUMBER OF PEOPLE : 4-6**

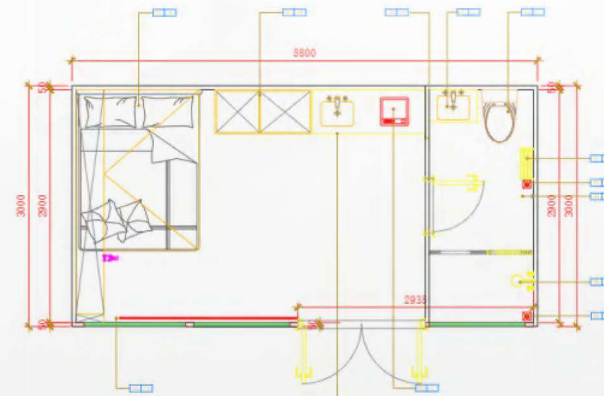
GLASS STEEL APPLE CABIN



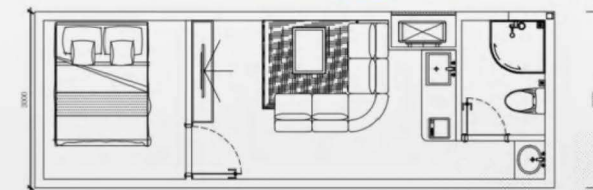
ONOカ

OVL-PB02

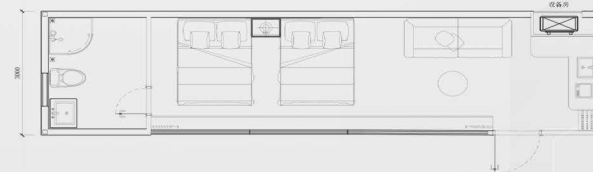
ONOカ



Size	5800*3000*3200mm
Construction area	13m ²
The number of people	1-2



Size	8500*3000*3200mm
Construction area	19m ²
The number of people	2-4



Size	11500*3000*3200mm
Construction area	26.5m ²
The number of people	4-6

OPTIONAL SIZE

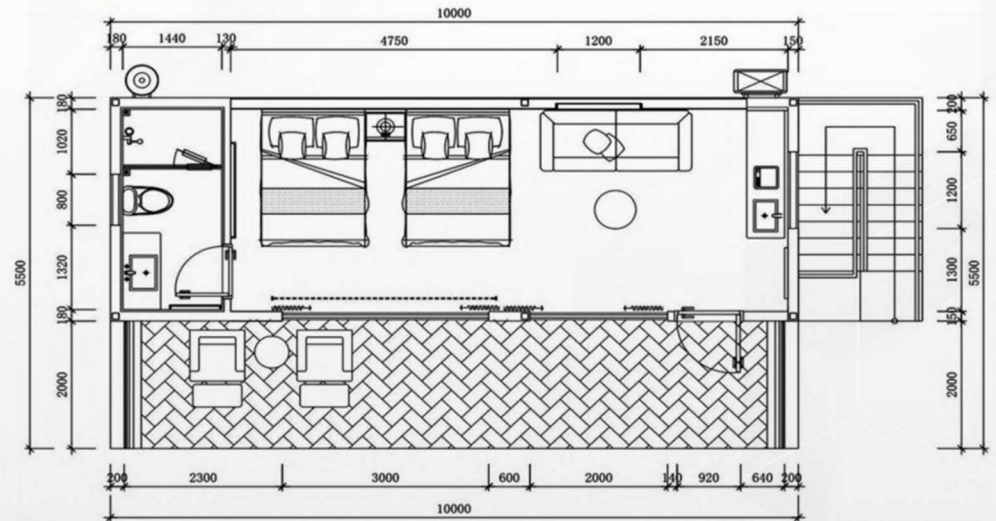
GLASS STEEL APPLE CABIN



ONOカ

OVL-PB03

ONOカ



OPTIONAL SIZE

Size	10000*3500*3200mm
Construction area	35m ²
The number of people	4-8

**GLASS STEEL
APPLE CABIN**



ONOカ

OVL-PB05

ONOカ



Size	11500*3000*3000mm
Construction area	34.5m²
The number of people	4-6

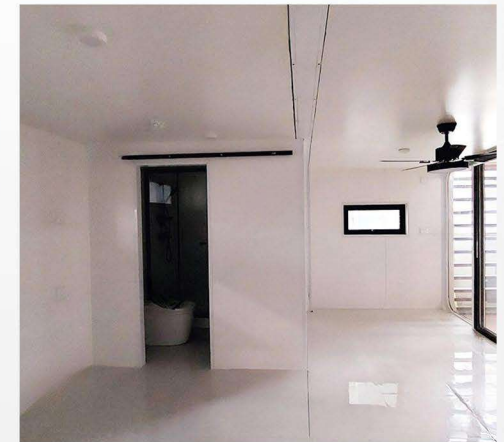
**GLASS STEEL
APPLE CABIN**



ONOカ

OVL-PB06

ONOカ



Cabin Size	11500*3000*3000mm
Fence Size	5800*2250*2450mm
Building area	26M²
The number of people	4-6

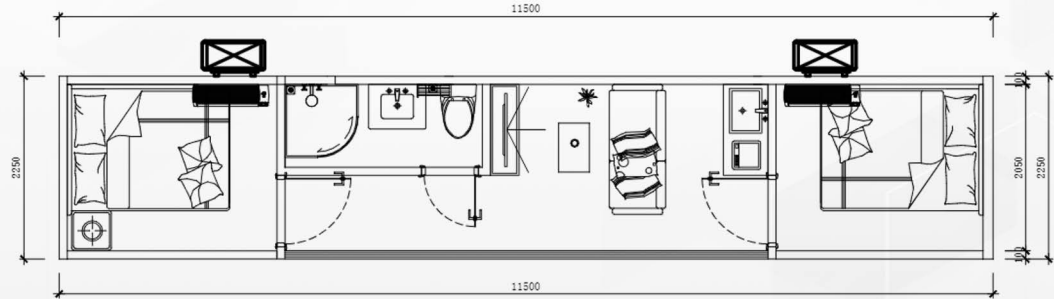
GLASS STEEL APPLE CABIN



ONOカ

OVL-PB09

ONOカ



Size	11500*2250*2450mm
Construction area	25.8m²
The number of people	4-6

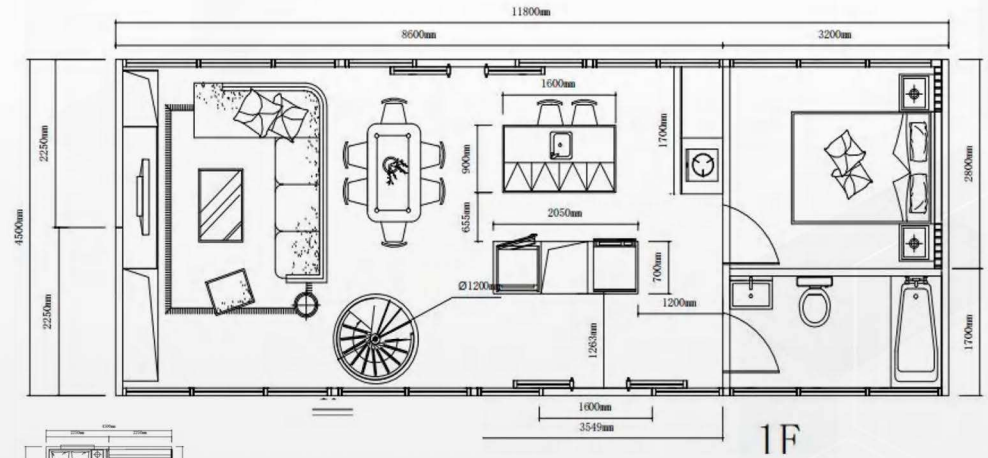
GLASS STEEL APPLE CABIN



ONOカ

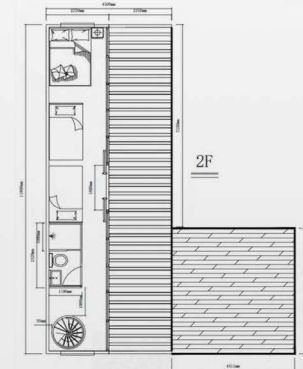
OVL-DB01

ONOカ



SECOND FLOOR

Size	11500*2250*2450mm Pavilion
Building Area	25.9m²
Occupancy	4-6 People



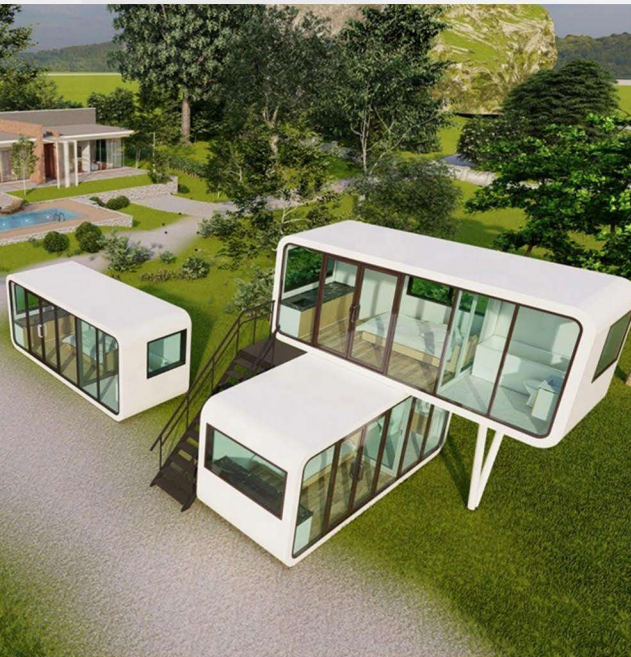
GROUND FLOOR

Size	11500*4500*2450mm
Building Area	51.8m²
Occupancy	4-6 People

GLASS STEEL APPLE CABIN



ONOカ



OVL-DB02

ONOカ



SECOND FLOOR

Size	5800*2250*2450mm
Building Area	13m ²
Occupancy	4-6 People

GROUND FLOOR

Size	5800*2250*2450mm
Building Area	13m ²
Occupancy	4-6 People

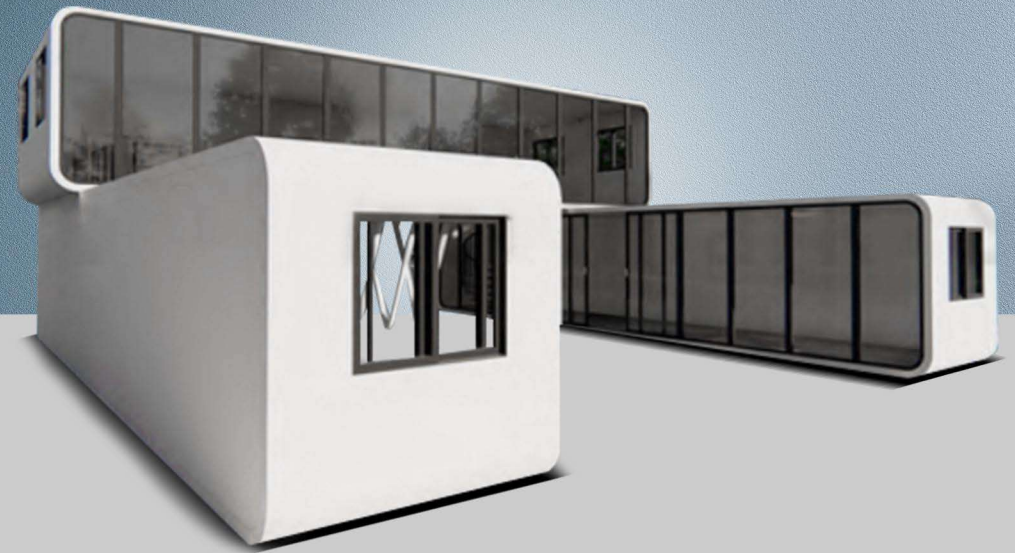
GLASS STEEL APPLE CABIN



ONOKA

OVL-DB03

ONOKA



GROUND FLOOR

Size	11500*2250*2450mm
Building area	134.5m ²
Occupancy	8-16 People
The four hulls are spliced into two layers	



**GLASS STEEL
APPLE CABIN**



ONOKA

OVL-DB04

ONOKA



SECOND FLOOR

Size	5800*2500*2450mm
Building area	13m ²
Occupancy	2-4 People

GROUND FLOOR

Size	5800*2500*2450mm
Building area	13m ²
Occupancy	2-4 People

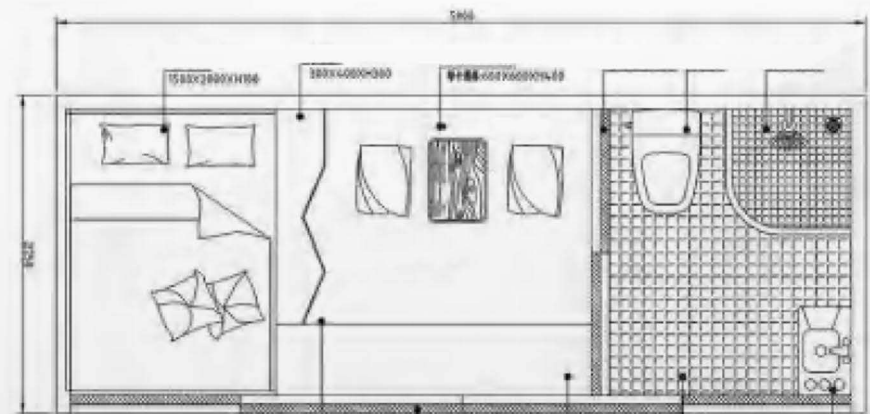
GLASS STEEL APPLE CABIN



ONOKA

OVL-TB01

ONOKA



Size	5800*2250*2450mm
Construction area	13m ²
The number of people	1-2 People

OVL-MB01

ONOKA



Size	3500*2250*2450mm
Construction area	5m ²
The number of people	1-2



OVL-MB02

ONOKA



Size	3500*2250*2450mm
Construction area	7.9m ²
The number of people	2-4



CAPSULE HOUSE MODEL 1



ONOカ

MODEL 1

ONOカ



Product Dimensions	9.5*3.2*3.2m
Building Area	30m ²



So far, S5 prefab house has been the most popular and best-selling product of Onoda. The interior design adopts the hotel suite layout, one bedroom one living room pattern, separating wet and dry areas in the bathroom, spacious washbasin, and luxurious balcony, which makes S5 the best selling model.



CAPSULE HOUSE MODEL 2



ONODA

MODEL 2

ONODA



Product Dimensions	11.5*3.2*3.2m
Building Area	36.8 m ²



Onoda top-end flagship model features an all-steel frame and an aluminium alloy case, enhanced by the classic black and white two-color palette; Original smooth curve appearance design, super high appearance level by the market flow preference.



CAPSULE HOUSE MODEL 3



ONOカ

MODEL 3

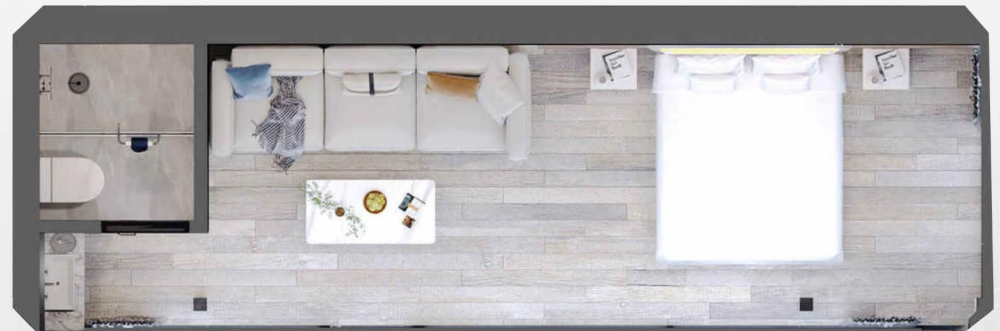
ONOカ



Product Dimensions	7*3.2*3.2m 11.5*3,2*3.2 m
Building Area	36.8 m ²



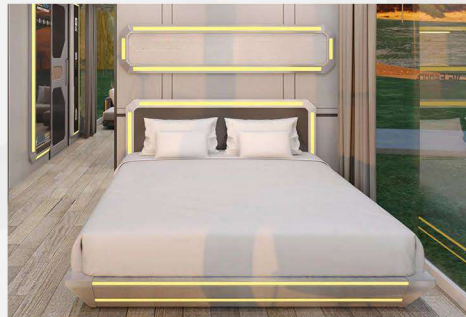
The design is inspired by the black panther in nature, and the color of the appearance can better integrate with the nature. The series adopts arc design technique in the corner of the appearance, the overall frame line is simple and clear, and the internal layout is reasonable, which can be widely used in various scenes.



CAPSULE HOUSE MODEL 4

MODEL 4

ONODA



Super comfortable large single room, with dry and wet separation bathroom, clear and reasonable layout With super comfortable space comfort, Onoda give you a comfortable home.

Product Dimensions	6*3.2*3.2 m
Building Area	19.2 m ²



CAPSULE HOUSE MODEL 5



MODEL 5

ONODA



Onoda very cost-effective products, the theme of Galvanized steel + Aluminum alloy ashell module, the plane layout function is reasonable.

Product Dimensions	6.06*2.44*2.68 m
Building Area	14.78 m ²



ONODA CAPSULE HOUSE

Integrated audio and video system, providing a wonderful audio-visual experience, wireless Bluetooth connection, playing your favorite music.

The floodlights in the sleeping area are illuminated, and the sunroof option is also available. With the smart mode, the lighting environment can be easily controlled.

The full range of micro-station unique 270 panoramic floor to ceiling windows creates a dream experience of sleeping in the landscape.



Completely free layout, maximizing the need for soft installation in various scenarios, opening up unlimited possibilities.

The foyer space is only a step away from pure natural fun to the ultimate modern life.

Onoda patented high-quality bathroom, the whole series uses high end bathroom brand products.

THE STANDARD SYSTEM

- STANDARD COLOR FACEDE PANEL
- ULTRA-LOW ENERGY THERMAL INSULATION SYSTEM
- STANDARD COLOR EXTERNAL ALUMINIUM - PANEL OPTIONAL COLOR SELECTION
- STANDARD COLOR INTERNAL PANEL - OPTIONAL FINISH MATERIAL SELECTION
- STANDARD COLOR SHELF PANEL - OPTIONAL FINISH MATERIAL SELECTION
- PANORAMIC INSULATED DOUBLE GLAZED WINDOW SYSTEM
- WOOD FLOOR
- ENTIRE ROOM LIGHTING
- LUXURY BRAND INTEGRATED BATHROOM
- SMART ENTRY

THE OPTIONAL SYSTEM

- OPTIONAL AIR - CONDITIONER, WATER HEATING & VENTILATION SYSTEM
- OPTIONAL UNDER - FLOOR HEATING SYSTEM

ONODA

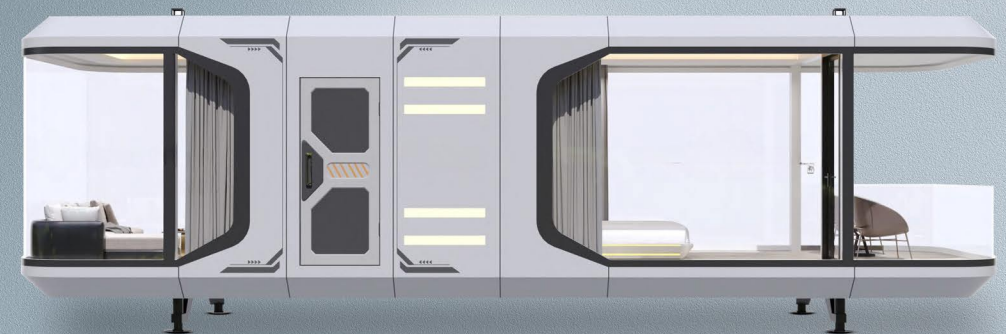


THE STANDARD SYSTEM

- AIR CONDITIONER
- AUTOMATIC CURTAIN
- INTEGRATED SOUND SYSTEM
- CEILING LIGHT STRIP
- SKYLIGHT
- BALCONY
- SUPERIOR LAMINATE FLOORING
- ECOLOGICAL AND ENVIRONMENT AT PROTECTION INTERIOR DECORATION

THE OPTIONAL SYSTEM

- PANORAMIC ELECTRIC FROSTED GLASS
- ELECTRIC FLOOR HEATING
- AUTOMATIC PROJECTION SCREEN






- Module prefabrication, integrated production, product quality assurance.
- Simple foundation, fast lifting, The most beautiful scenery line.
- Removable, does not harden the ground, does not damage the environment.
- Low energy consumption, environmental pollution and zero pollution to the environment.

- Exquisite decoration, intelligent system, you can check in with your bag.
- with its own traffic network red IP, in one with the curious psychology.
- Controwaioe investment, consideraple return, snortcyce and large return.

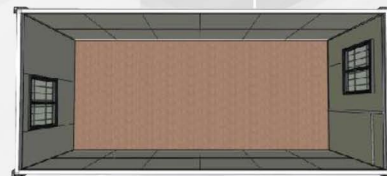
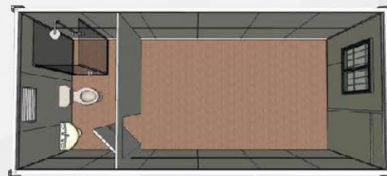
FOLDING CONTAINER HOUSE (CAMP)



- 
12 PCS
40HQ
- 
100%
FIREPROOF
- 
100%
FOLDING
- 
100%
WATERPROOF

FEATURE

- 14 MINUTES CAN INSTALL 1 HOUSE.
- GALVANIZED STEEL STRUCTURE.
- 40MM FIRE PROOF IEPS SANDWICH PANEL FOR WALL & 100MM GLASS WOOL FOR ROOF.
- ALUMINIUM SLIDING WINDOWS WITH SECURITY BAR.
- FIRE PROOF IEPS SANDWICH PANEL DOOR.
- 18MM MGO BOARD FOR FLOOR.
- WHEN IS FOLDED, THE HEIGHT IS ONLY 350MM.
- INCLUDE ELECTRICAL.



WHY CHOOSE US










- OVERALL FORCE & FULLY FOLDED
- ONE 40HQ CAN LOAD 12UNITS
- SAVES 20% SHIPPING COST
- OTHERS JUST LOAD 10 UNITS
- IEPS FIRE PROOF & WATER PROOF SANDWICH PANEL FOR WALL AND ROOF
- OTHERS DONOT HAVE THIS PERFORMANCE
- THE SPECIAL ARC DESIGN FOR THE ROOFTOP

ONODA FACTORY



OTHER SUPPLIERS



- 
IEPS Fireproof
Panel For Wall
- 
100mm Glass Wool Forproof
- 
Aluminium Window
With Security Bar
- 
LED Lighting
- 
Fireproof Sandwich
Panel Door
- 
International Socket
- 
18mm
MGO Board
- 
Connect With
Aisle Panel
- 
High Strength
Stainless Steel Hinge



CONNECTION



ACCOMMODATION



OFFICE



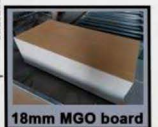
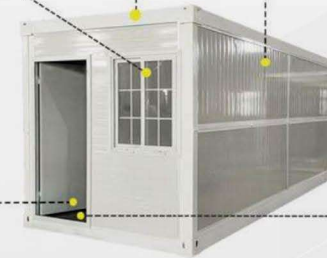
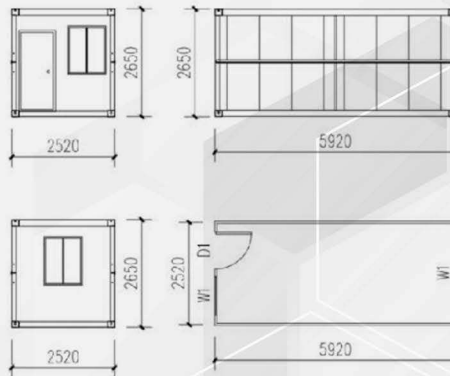
FOLDING FLAT PACK CONTAINER HOUSE



SIZE : 2.52MX5.92MX2.65H

FEATURES

- HIGHER QUALITY & LUXURY!
- 100% WATER PROOF!
- 50MM SANDWICH PANEL FOR WALL
- 100MM GLASS WOOL INSULATION FOR ROOF!
- PVC DOUBLE GLASS SLIDING WINDOWS.
- STEEL DOOR WITH HIGH QUALITY HANDLE LOCK
- 188MM MGO BOARD FOR FLOOR.
- INCLUDING BASIC ROOM ELECTRICS.



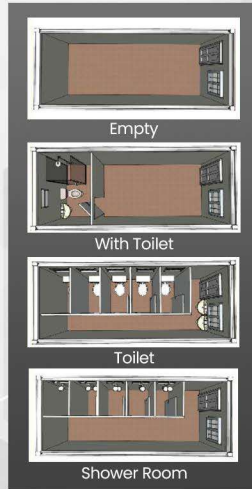
FLAT PACK CONTAINER HOUSE



SIZE : 2.425MX5.9MX2.8H

FEATURES

- COME WITH COMPLETED ROOF & FLOOR.
- ELECTRIC WIRES RUN OVER CEILING, INCLUDING DB, BREAKER, POWER INLET & SOCKETS.
- FULLY GALVANIZED STEEL STRUCTURE.
- 50MM EPS / GLASS WOOL SANDWICH PANEL FOR WALL & 100MM GLASS WOOL FOR ROOF.
- STEEL DOOR & PVC DOUBLE GLASS WINDOWS WITH SECURITY BAR.
- STEEL SHEET MODERN INDOOR LINING.
- 18MM CEMENT BOARD FOR FLOORING.



INSTALLATION



TYPICAL PROJECT



DETACHABLE CONTAINER HOUSE

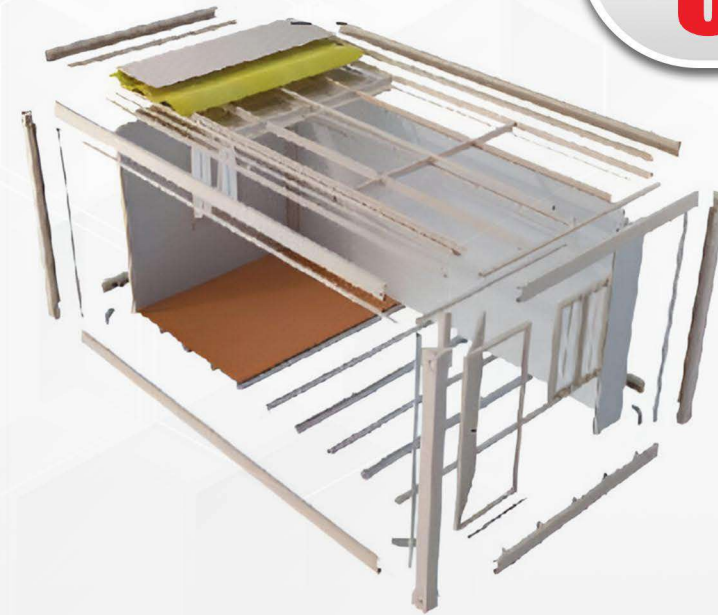
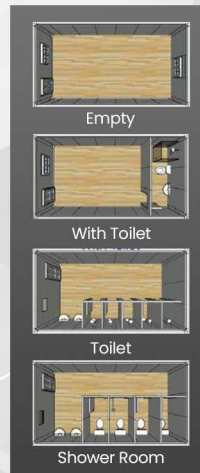


SIZE : 3MX5.95MX2.85H

- SEPARATE STEEL STRUCTURE
- CAN LOAD IN 20FT CONTAINER
- CUSTOMIZED SIZE
- NO NEED CRANE TO INSTALL

FEATURES

- GALVANIZED STEEL STRUCTURE.
- 50MM EPS/50MM FIREPROOF GLASS WOOL/ROCK WOOL SANDWICH PANEL FOR WALL.
- 0.476MM STEEL SHEET +50MM GLASS WOOL STEEL SHEET CEILING FOR ROOF.
- PVC SLIDING WINDOWS WITH SECURITY BAR
- STEEL DOOR.
- 18MM MGO BOARD FOR FLOOR.



Aluminium
Glass Window



Internal Looking



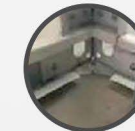
Roof Connecting



Panel
Wall



Steel
Structure



Steel
Connecting



Base
Connecting



Steel
Door

PROJECT



EXPANDABLE TINY HOUSE

ONOKA



Type A

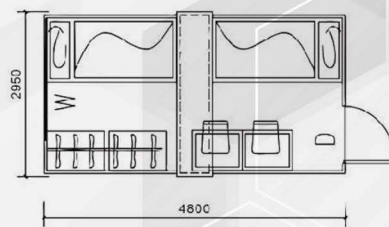


Type B

SIZE : 2.95MX4.8MX2.5H

FEATURES

- STRUCTURE: STEEL STRUCTURE FRAME, SQUARE TUBE BEAM AND SANDWICH PANEL COMBINATION
- FLOORING: 15MM PLYWOOD (WATERPROOF AND FIREPROOF)
- WALL: 50MM EPS SANDWICH PANEL
- DOOR: 50MM EPS SANDWICH PANEL DOOR
- WINDOW: ALUMINUM ALLOY SLIDING WINDOW
- ACCESSORIES: ADJUSTING FOOTING, WHEELS



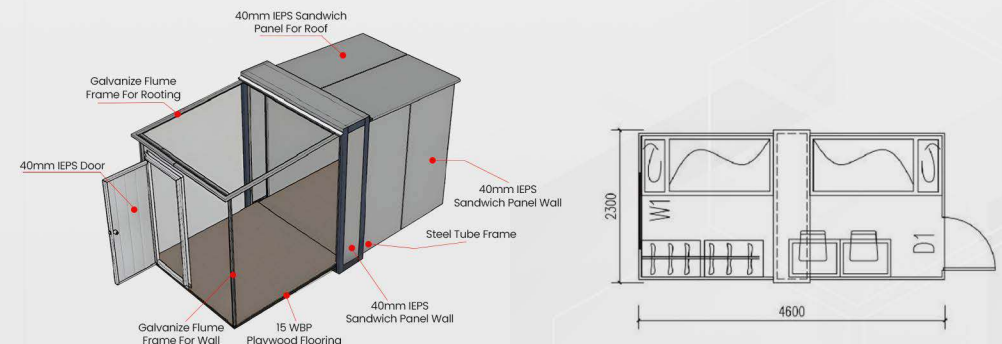
INSTALLATION



SIZE : 2.95MX4.8MX2.5H

FEATURES

- STRUCTURE: STEEL STRUCTURE FRAME, SQUARE TUBE BEAM AND SANDWICH PANEL COMBINATION
- FLOORING: 15MM WBP PLYWOOD FLOOR BOARD (WATERPROOF AND FIREPROOF)
- WALL: 40MM IEPS SANDWICH PANEL
- DOOR: 40MM IEPS SANDWICH PANEL DOOR
- WINDOW: ALUMINUM ALLOY SLIDING WINDOW
- ACCESSORIES: ADJUSTING FOOTING, WHEELS



EXPANDABLE CONTAINER HOUSE



Foldable Shade Luxury Bamboo Ceiling Adjustable Leg (Rust-Proof) Hidden wheels for easy movement in loading and unloading Cross Beam To Strengthen then The Floor Bearing Glass Sliding Door (Non-Peekable) LED Ceiling Light

FEATURES

- FLOOR: STEEL STRUCTURE + BAMBOO COMPOSITE BOARD + PVC TILE FLOORING;
- 50MM EPS SANWICH PANEL (OPTIONAL 50MM GLASS WOOL SANDWICH PANEL)
- ROOF: 100MM GLASS WOOL INSULATION (MAIN BODY) +50MM EPS SANDWICH PANEL (EXTENSION)
- WINDOW: ALUMINUM UP-SWING WINDOW (OPTIONAL PVC DOUBLE GLASS SLIDING WINDOW)
- DOOR: GLASS SLIDING DOOR + SANDWICH PANEL DOORS.



INSTALL

5 STEPS 1 HOUR INSTALL A HOME



TYPE A	27.84m ² (6 Sets/40HQ)
Opening Size	5.8m x 4.8m x 2.5h
Closing Size	5.8m x 0.7m x 2.5h



TYPE B	36.54m ² (2 Sets/40HQ)
Opening Size	5.8m x 6.3 x 2.5h
Closing Size	5.8m x 2.2m x 2.5h



TYPE C	24.65m ² (2 Sets/40HQ)
Opening Size	5.8m x 4.25 x 2.5h
Closing Size	5.8m x 2.2m x 2.5h



TYPE D	73.08m ² (1 Sets/40HQ)
Opening Size	6.3m x 11.6 x 2.5h
Closing Size	2.2m x 11.6m x 2.5h

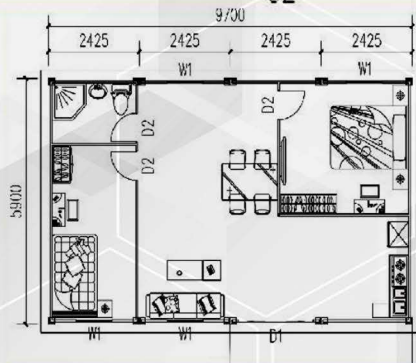
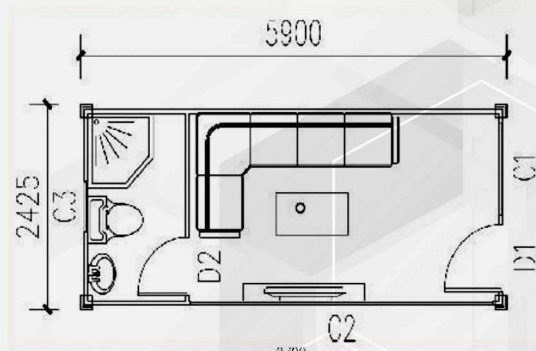
CONTAINER HOME



TYPE A : 2.425MX5.9MX2.8H



TYPE B : 5.9MX9.7MX2.8H



BEDROOMS
KITCHEN

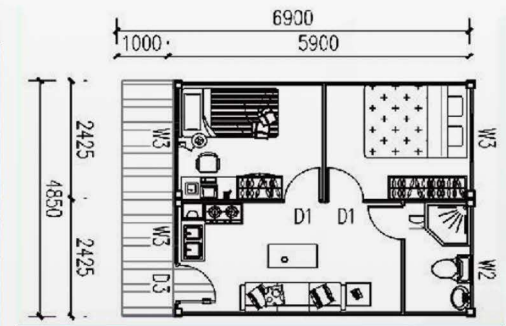


LIVING
TOILETS

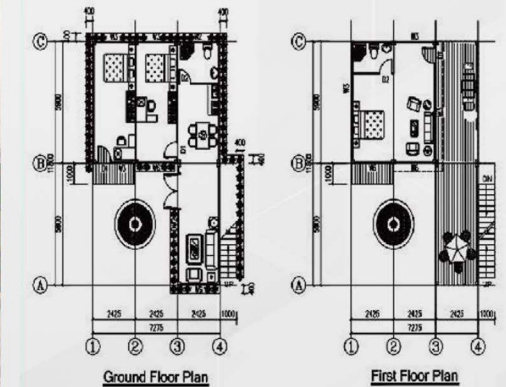


ONOKA

TYPE : C : 4.85MX6.9MX2.8H



TYPE : D : 7.275MX11.8MX5.6H



CONTAINER RESORT



ONO 加



CONTAINER HOTEL

TYPE A



TYPE B



TYPE C



1. Economic design: Type A + Type B
Luxury design : Type C + Type D
2. Office design: Inside have officemanager room, meeting room, public toilet etc.
3. Accommodation design: Inside have reception room, bedrooms, canteen, public toilet, gym ect.

TYPE D



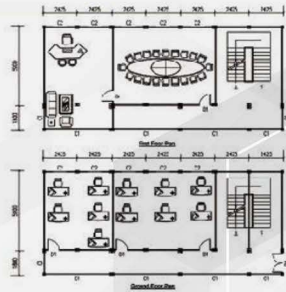
CONTAINER RESORT



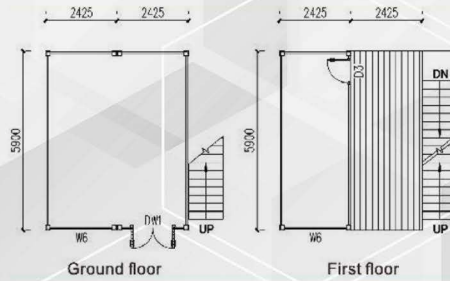
ONO 加



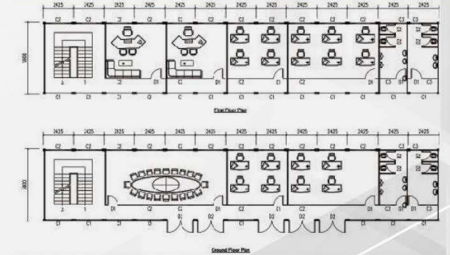
Manager Room, Office, Reception Room, Meeting Room, Toilet



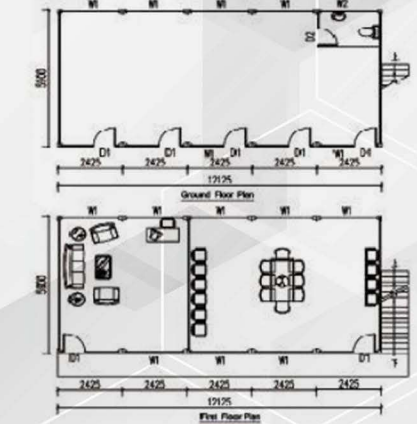
TYPE A : 7.7mx16.975mx5.6h



TYPE B : 4.85mx5.9x5.6h



TYPE C : 31.525mx5.9mx5.6h



TYPE D : 12.125mx5.9mx5.6h

CONTAINER MALL & CONTAINER SHOP



ONOKA



ONOKA

Type A
Expandable container
Two floor coffee shop 46.5m²
Group floor : expandable design
First floor : with balcony



Type B
Folding Container Store 14.5m²
Economic Shop

Type C
Flat Pack Container Store 14.31m²
Economic Shop



Type D
Flat Pack Container Store 14.31 m²
Extended Awning 14.31m²
Total 28.62m²



Type E
Luxury Container Shop
Total 14.31m²

Type F
One Floor Shop 7m²
Extended Awning 7m²
Total 14.31m²



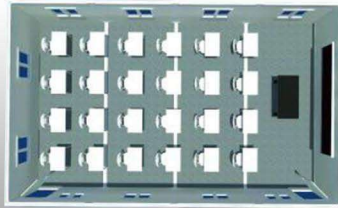
CONTAINER SCHOOL



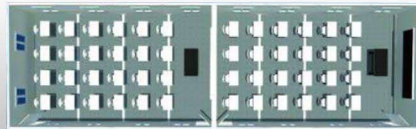
SCHOOL



ACCOMMODATION



TYPE A : (24 Students)
Size : 5.9Mx9.7Mx2.8h



TYPE B : (96 Students)
Size : 5.9Mx19.4Mx5.6h



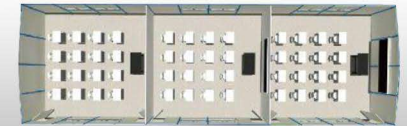
PREFAB K CLASS ROOM



OFFICE



TYPE C : (20 Students)
Size : 7.44Mx7.44Mx2.85h



TYPE D : (60 Students)
Size : 5.62Mx22Mx2.85h



TOILET

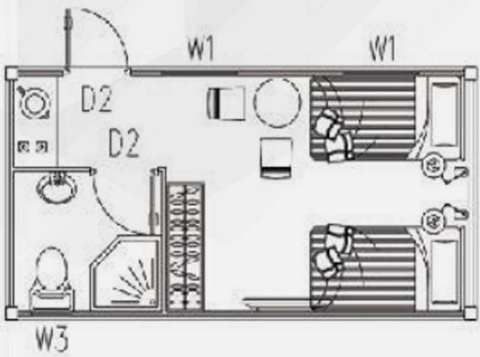


MEETING ROOM



CATEEN

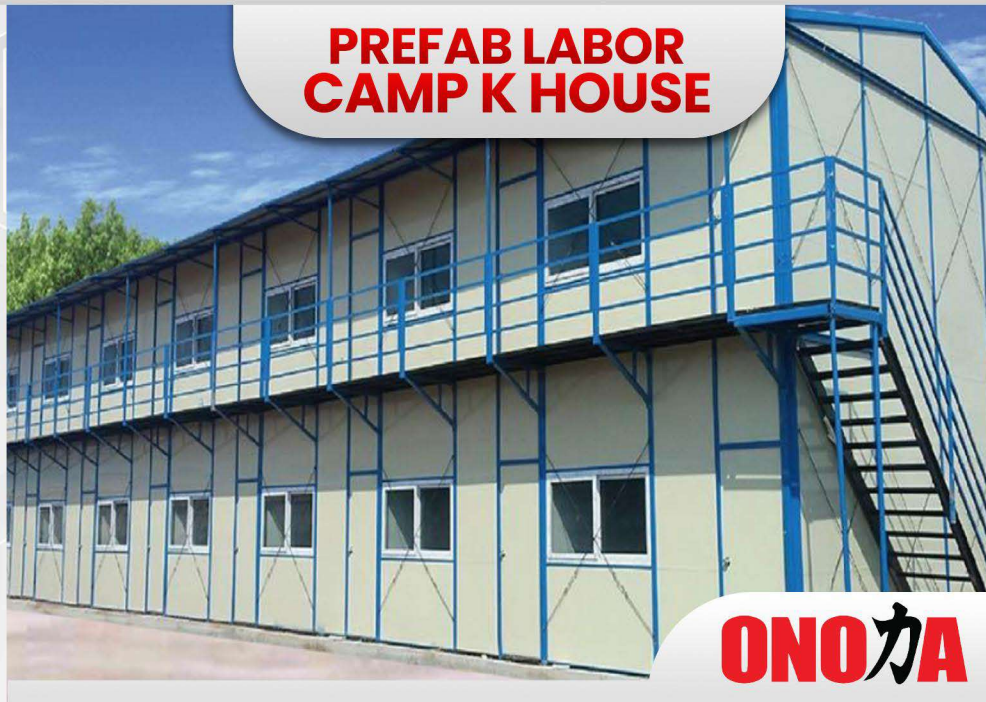
WORD CUP CONTAINER



SIZE : 3MX5.95MX2.85H



PREFAB LABOR CAMP K HOUSE

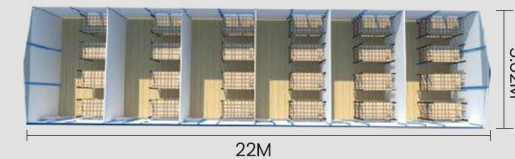


ONO 加

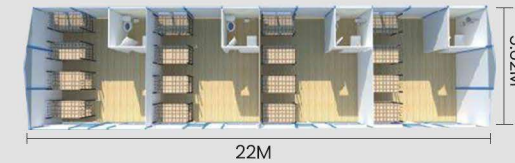


LAYOUT FITUR

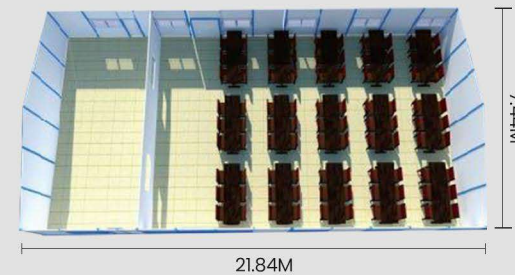
1. "C" SECTION STEEL FOR COLUMNS AND BEAMS.
2. 50MM EPS / ROCK WOOL / GLASS WOOL / PU SANDWICH PANEL FOR WALL & ROOF.
3. PVC WINDOWS AND SANDWICH PANEL DOORS.
4. 1X40HQ CAN LOAD AROUND 280-320 M2.



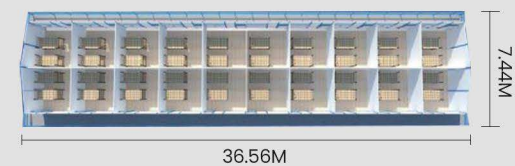
TYPE A
3K X 12K X 3P
DORMITORY



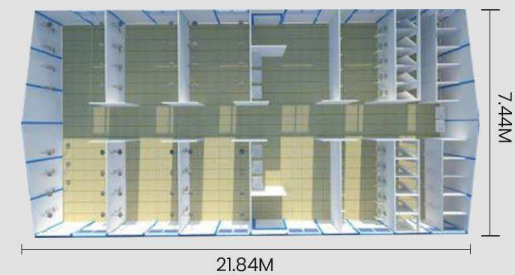
TYPE B
3K X 12K X 3P
DORMITORY



TYPE C
6K X 12K X 3P
CANTEEN



TYPE D
4K X 20K X 3P
DORMITORY



TYPE E
6K X 12K X 3P
BATHROOM

THE AREA COMPARING FORM OF SLOPE STYLE HOUSE K HOUSE : 1K=1.82M, 1P=0.95M

Length	Width	ONE FLOOR (3P)			TWO FLOOR (6P)			THREE FLOOR (9P)		
		3K	4K	5K	3K	4K	5K	3K	4K	5K
4	K	45.53	59.07	72.61	103.79	130.87	157.95	176.04	216.66	257.28
5	K	56.67	73.52	90.38	126.97	160.68	194.39	211.27	261.83	312.39
6	K	67.81	87.98	108.14	150.16	190.49	230.82	246.51	307.01	367.50
7	K	78.95	102.43	125.90	173.35	220.30	267.26	281.74	352.18	422.61
8	K	90.09	116.88	143.67	196.53	250.11	303.69	316.98	397.35	477.72
9	K	101.22	131.33	161.43	219.72	279.93	340.13	352.21	442.52	532.83
10	K	112.36	145.78	179.19	242.91	309.74	376.57	387.45	487.70	587.94
11	K	123.50	160.23	196.96	266.09	339.55	413.00	422.68	532.87	643.05
12	K	134.64	174.68	214.72	289.28	369.36	449.44	457.92	578.04	698.16
13	K	145.78	189.13	232.48	312.47	399.17	485.88	493.16	623.21	753.27
14	K	156.92	203.58	250.25	335.65	428.98	522.31	528.39	668.38	808.38
15	K	168.06	218.03	268.01	358.84	458.79	558.75	563.63	713.56	863.49
16	K	179.19	232.48	285.77	382.03	488.61	595.19	598.86	758.73	918.60
17	K	190.33	246.93	303.54	405.21	518.42	631.62	634.10	803.90	973.71
18	K	201.47	261.38	321.30	428.40	548.23	668.06	669.33	849.07	1028.82
19	K	212.61	275.84	339.06	451.59	578.04	704.49	704.57	894.25	1083.93
20	K	223.75	290.29	356.83	474.77	607.85	740.93	739.80	939.42	1139.04
21	K	234.89	304.74	374.59	497.96	637.66	777.37	775.04	984.59	1194.15
22	K	246.02	319.19	392.35	521.15	667.48	813.80	810.27	1029.76	1249.26

Explanation: The two floor's house has two pcs stair in standard. Each side of gable wall has one. The stair's area is 4.5m²/pc. The three floor stair is 16m²/pc. The area will increase or reduce according the stair's quantity.

The regular of area counting way:

1. The house area: Exterior wall length x exterior wall width x floor number.
2. Standard stair: 4.5m²/pc, corner stair (special for three floors house): 16m²/pc
3. Awning area: house shadow area x 0.5.
4. Aisle board area: house shadow area.
5. Total area = 1 + 2 + 3 + 4

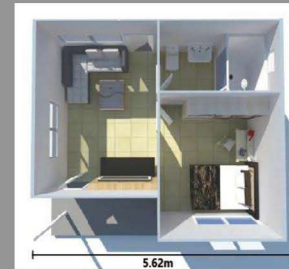
Feature



REFUGEE HOUSE



3K x 4K x 3P (Total Area Is 41.8m²)



One Bedroom

3K x 5K x 3P (Total Area Is 52m²)



Two Bedroom

FEATURES

1. Steel structure.
2. 50mm EPS/Glass wool sandwich panel for wall and roof.
3. PVC windows and sandwich panel doors.
4. Easy to assemble and disassemble for several times.



PREFAB LABOR CAMP T HOUSE



ONO 加

FEATURES

1. Square tube steel for columns and beams.
2. 50mm EPS / Rock wool / PU sandwich panel for wall & roof.
3. Aluminum sliding windows and sandwichpanel and steel doors.
4. Modern design. All the steel structures are hidden inside.



SUDAN HOME



ONOKA



3m

6m
3m x 6m
One Bedroom With Toilet



3m

12m

3m x 12m / 3m x 9m
Two Bedroom, Living Room, With Toilet



3m

9m
3m x 9m
Two Bedroom With Toilet



ACCESSORIES

ONOKA

DOOR



KITCHEN CABINET



FLOOR



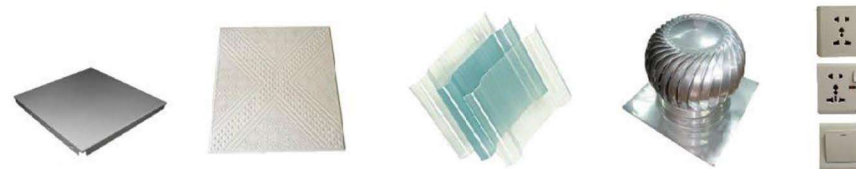
HOT SALES



SANITARY WARE



ACCESSORIES



LIGHT STEEL VILLA



ONOKA



PORTABLE TOILETS



Type A

1. Material : EPS panel, steel
2. Size : 1.15m X 1.15m X 2.3m
3. Fittings : Squat toilet bowl, washing basin, water tap, Ventilation fan, lock.
4. Weight : 90KGS.
5. Transportation : This model can be shipped disassembled or fully assembled.

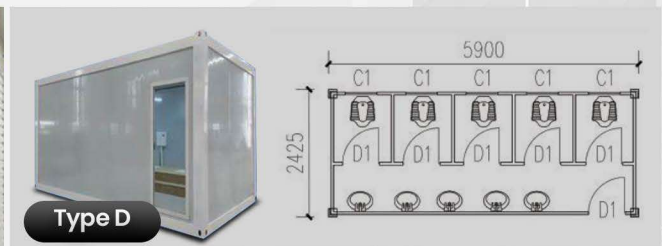


Type B

1. Material : EPS panel, steel
2. Size : 1.15m X 1.15m X 2.3m
3. Fittings : Squat toilet bowl, washing basin, water tap, Ventilation fan, lock.
4. Weight : 90KGS.
5. Transportation : This model can be shipped disassembled or fully assembled.



Type C



Type D



STEEL STRUCTURE WARE HOUSE



FEATURES

1. "H" section steel for columns and beams.
2. 50mm EPS/PU sandwich panel or 0.476mm single steel sheet for wall & roof.
3. Aluminum sliding windows and steel sliding door or roller shutter door.
4. With the lighting tiles, ventilation balls, galvanized gutters & water pipes.



STEEL SHEDS



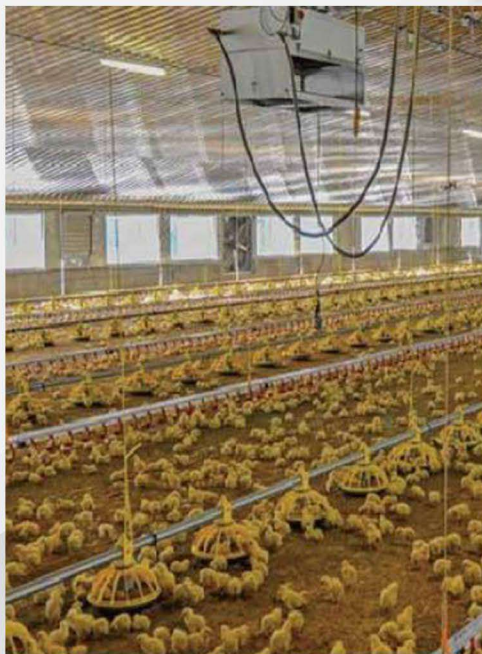
QATAR WAREHOUSE



COW SHIELD



COW SHIELD



INSTALLATION



FOUNDATION 1



FOUNDATION 1



BRICKWALL & PANEL

